

# Stock Class Sterling

## User Manual

Tilhører:

Arms Gallery  
Nybrogade 26,  
1203 København K.  
Tel: 33 118 338  
Fax: 33 138 338  
mail@armsgallery.dk  
www.armsgallery.dk



### Arrow Precision Limited

Unit 7 Elliott Industrial Park,  
Eastern Road,  
Aldershot,  
Hampshire, GU12 4TE,  
United Kingdom

Tel: (01252) 408 552  
Fax: (01252) 408 551

E-mail: [sales@arrow-precision.com](mailto:sales@arrow-precision.com)  
[www.arrow-precision.com](http://www.arrow-precision.com)

**You must read this manual carefully  
before attempting to use this marker!!  
It contains important safety information  
and operating instructions.**

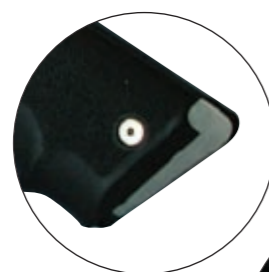






## Contents

Contents	Page 1
Introducing the Sterling	Page 2
Warning	Page 3
Power Sources	Page 4-5
Basic Operation	Pages 6
Velocity Adjustment	Page 7
Servicing	Pages 9
Troubleshooting	Page 10
Assembly and Disassembly	Pages 11 - 15
Parts Diagram and Parts Numbers	Page 16 - 20



## Notes

---



---



---



---



---



---



---



---



---



---



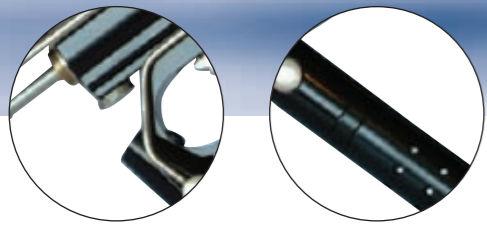
---



---



---



Notes

---

---

---

---

---

---

---

---

---

---

---

---

---

---

---

---

---

---

---

---

---

---

---

---

Congratulations on the purchase of your Paintball marker.

**Introducing the Sterling- known as the Rolls Royce of pumps.**

The Sterling comes in three models - the Bronze, the STP and the Stock Class

The Bronze is supplied with a set of 10 washers and two springs to allow velocity adjustment, the washers are used as spring packers. There is also a spring spares kit comprising of three main springs and three valve springs.

The STP- Specially Tournament Prepared differs from the Bronze in a number of respects. The internals, hammer, pickup, pickup rod, pickup guide, cocking arm and sear are polished. There is a power adjuster to make velocity adjustment more convenient. It comes fitted with a bottom line and hose, which is highly finished.

The valve body is modified to take the hose, the bolt is better finished and has a larger gas hole for better flow. The STP is fitted with a 45 aluminium grip frame, with an improved trigger fitted with plated trigger shoe.

The bores of the body and the barrel are honed.

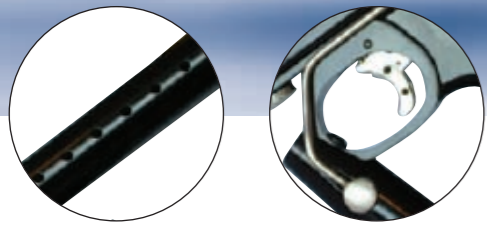
The body comes in either a bead blast or polished bright anodised finish and is fitted with a wire ball detent.

The Stock Class is the evolution of the STP. The paint loading system is adaptable for horizontal or vertical paint feed and the gas delivery is via internal hard pipe to the valve body. The gas can be delivered from a 12 gram powerlett, a CO<sub>2</sub> bottle or a regulated air system in various configurations.

The Sterling has a reputation unsurpassed within paintball. The STP has a pedigree that extends back to the early pump days when it earned its reputation as the finest pump paintball marker available worldwide.

The Sterling has been manufactured using the latest CNC Machinery and high-grade materials. The body, barrel and grip are machined from aircraft grade Aluminium Alloy.

Stainless steel is utilised for the internals, correctly maintained, it will give you many years of trouble free use, each marker is thoroughly inspected and tested prior to leaving the factory.



# WARNING

The Sterling Paintball Marker is not a toy. Misuse may cause serious injury or death. The user and any person within range must wear eye protection designed specifically for Paintball use. You must be 18 years of age to purchase, 14 years of age to use with adult supervision, or 10 years of age to use on a paintball field meeting ASTM standard 1777-97. Obey all local, state and federal laws. Keep out of reach of children!

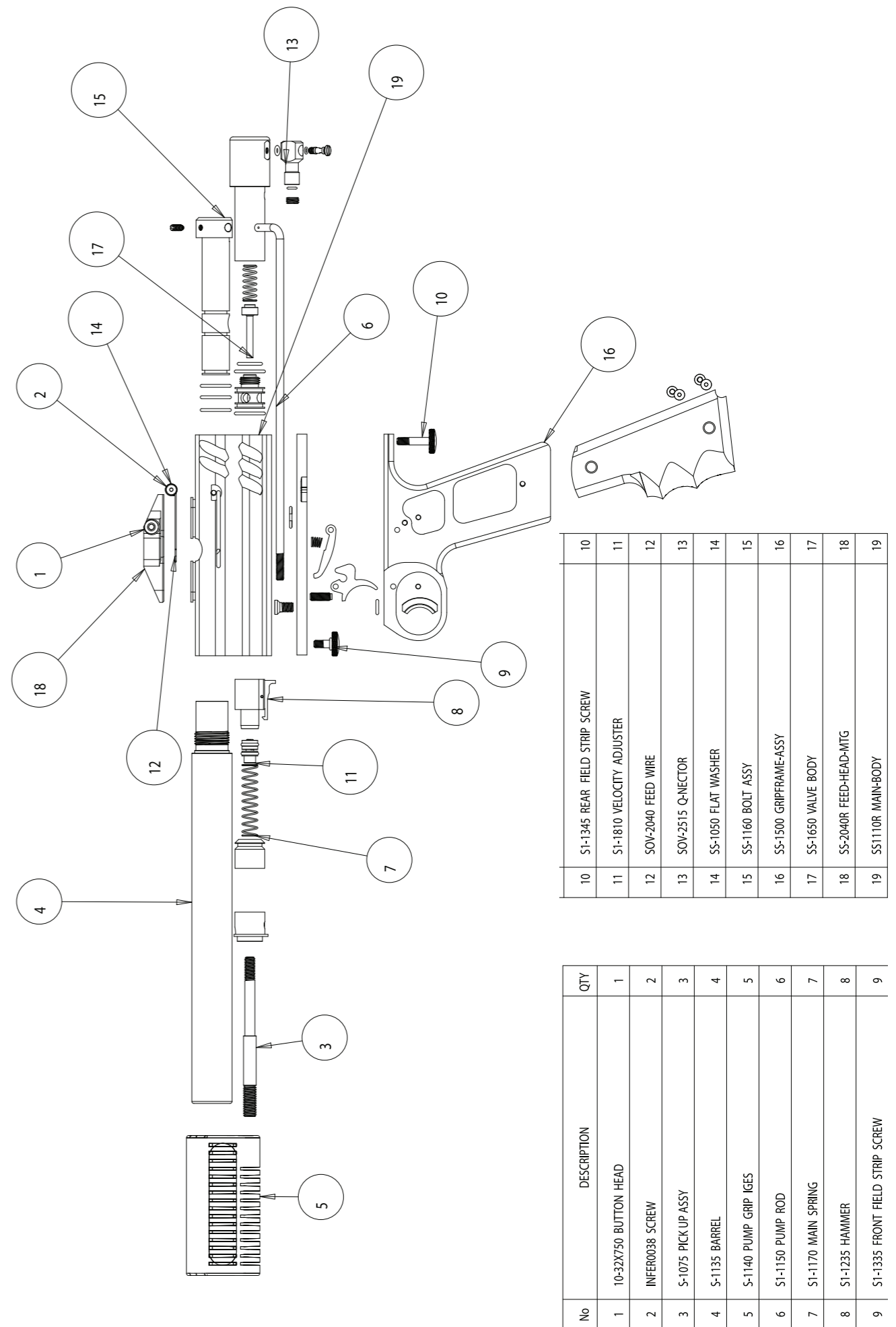
Follow the rules of safe Paintball marker handling. Read this operators manual before use.

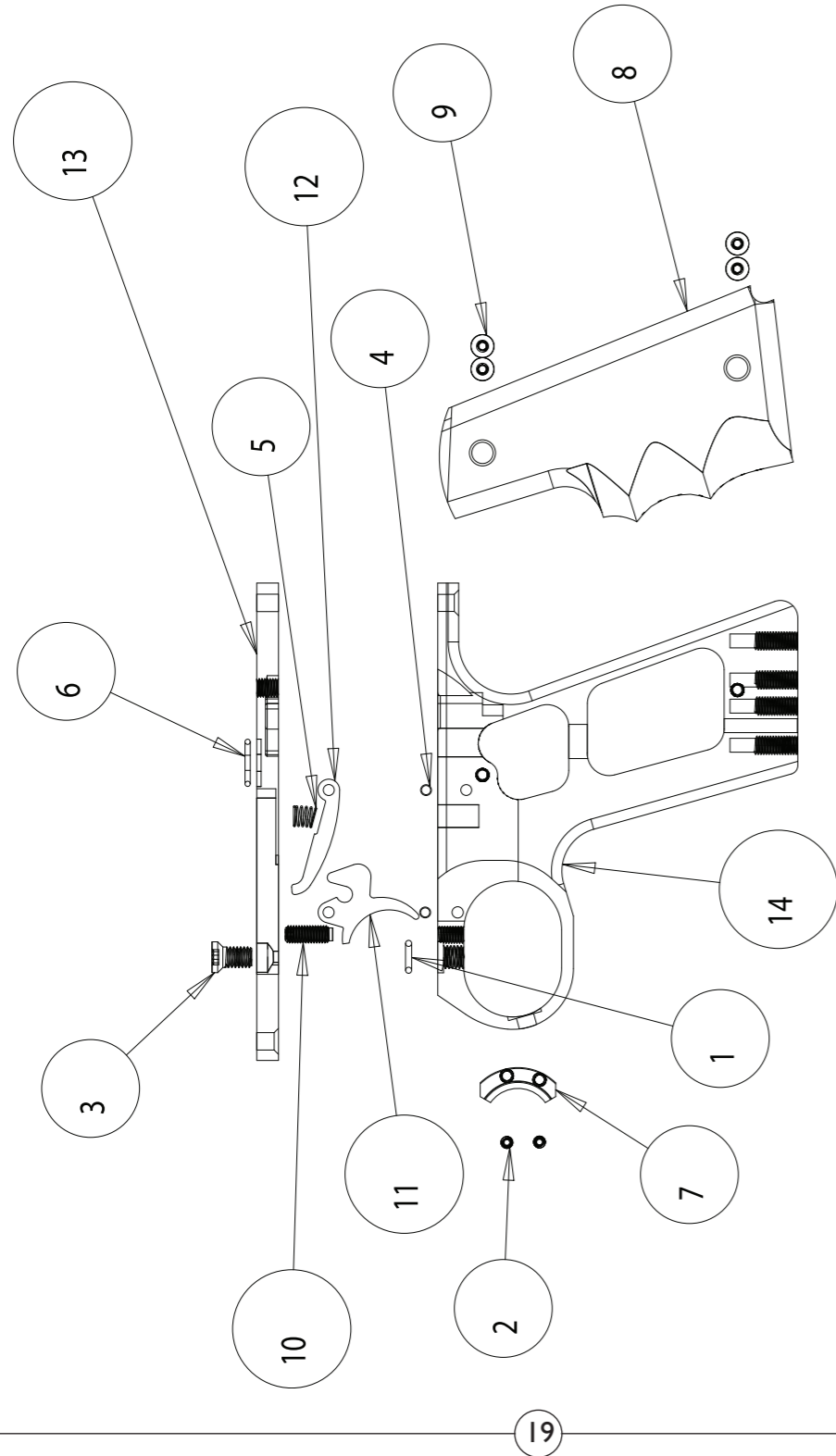
Always have barrel plug inserted in the barrel of the marker when not involved in actual play. Treat every marker as if it were loaded. Never point the marker at anything you don't wish to shoot. Keep marker uncocked until ready to fire.

Always remove gas source before assembly or disassembly. Store marker unloaded and de-gassed in a locked place. Follow warnings listed on gas source for handling and storage. Always wear eye, face and ear protection designed specifically for Paintball. Never point at or shoot animals, or any person who is not wearing eye protection designed specifically for Paintball.

Always measure your marker's velocity with a chronograph before playing Paintball. Never shoot at velocities in excess of 300 feet per second. Muzzle energy the legal maximum of 12 ft/lbs. This marker is designed to use .68 caliber paintballs.

Always carry your marker covered with a suitable cover in public places  
Do not act irresponsibly and damage yourself, others or the sport!





SS-1500 GRIPFRAME-ASSY

No	DESCRIPTION	QTY
1	FILR0240 O-RING BS010-70N	1
2	INFER0049 TRIGGER-SHOE-SCREW	2
3	S-1290 SCREW-SPACE-BAR	1
4	S-1360 DOWEL-PIN	2
5	S-1390 TRIGGER-SEAR-SPRING	1
6	S-1400 O-RING-SPACE-BAR	1
7	S-1800 TRIGGER-SHOE	1
8	S1-1320 HOGUE-GRIP	1
9	S1-1330 GRIP-MTG-SCREW	4
10	SOV-2770 TRIGGER-SUPPORT-SCREW	1
11	SS-1370 TRIGGER	1
12	SS-1380 TRIGGER_SEAR	1
13	SS-1280R SPACE-BAR	1
14	SS-1300R GRIPFRAME	1



## Power Source Information

This marker can be used with Air, Carbon Dioxide(CO<sub>2</sub>) or Nitrogen.

### Air vs. CO<sub>2</sub>

In the past, CO<sub>2</sub> was the most common gas used by paintball players. However, in recent years the use of CO<sub>2</sub> has declined in favor of a growing preference for high-pressure air or nitrogen.

There are a number of reasons for this:

**Cleanliness** – Because CO<sub>2</sub> is stored in liquid form, it has to “boil off” in order to escape. This process can lead to liquid CO<sub>2</sub> getting into the internal workings of the paintball marker. Conversely, compressed air is a naturally clean gas, so internal marker components remain free of damaging material.

**Marker jamming** – Another CO<sub>2</sub> downside: as gas boils off it absorbs heat from its surroundings to do so. This can cause freezing, which can damage and jam a paintball marker. Compressed air, on the other hand, is stored in a non-liquid gaseous state. Air is released from a cylinder at a constant pressure, enhancing marker accuracy and stability.

**Temperature** – CO<sub>2</sub> is also temperature-sensitive, which can affect the speed and trajectory of a propelled paintball. Extreme temperatures can greatly reduce the performance of markers powered by CO<sub>2</sub>.

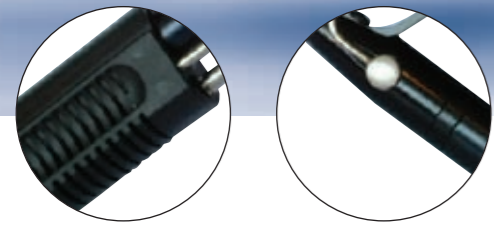
**Environmental** – Compressed air is a more environmentally friendly gas than CO<sub>2</sub>.

## Important CO<sub>2</sub> safety information: -

Always get cylinders filled by authorized knowledgeable technicians. Correct fill levels are critically important, do not try and fill yourself.

- Regularly inspect cylinders, reject any damaged cylinders, take care of your cylinder.
- Observe any local laws regarding compressed gases and the transportation thereof.
- Keep Cylinders out of direct sunlight as this can cause sudden rise in pressure. Cylinders should be fitted with burst disc safety devices to prevent over pressurization of the cylinder and gun.
- Always exercise great care when attaching or removing cylinders from your marker. When ambient temperature rises, it may be necessary to check paintball velocity has not risen above the legal maximum of 300 fps. This may involve clipping or changing the mainspring, or adjusting tension.





## Power Source Information (continued)

If you are using regulated air, set the output pressure of the regulator for 600/700 psi.

If using CO<sub>2</sub> use cylinder fitted with anti siphon tube.

1. **REGULATED.** You will need a reliable regulator approved for use with CO<sub>2</sub>. Ensure that your tank is fitted with an anti-siphon to prevent liquid CO<sub>2</sub> entering the regulator and causing malfunction.
2. **EXPANSION TANK.** This would normally be used on a vapour set up in place of the regulator. The expansion tank allows liquid CO<sub>2</sub> to boil off into a vapour state, helping to keep a steady supply pressure.
3. **REMOTE SET UP.** This configuration will allow gas vapour to be drawn from the top of the cylinder: Used in conjunction with a remote expansion system should ensure that no liquid will be drawn into the marker. Note, NO anti siphon tube is required on the cylinders.
4. **LIQUID ONLY.** You will need to fit a siphon tube to the cylinder with this set up. This can be a clunk tank setup, that is with the internal feed being made of a flexible tube with a weighted end, sometimes incorporating a filter. Or a solid tube bent down into the liquid, so only liquid is fed to the gun.

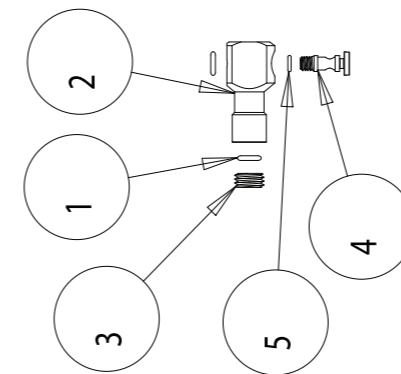
Note Using liquid can result in much higher velocities if the gun has originally been set to use vapour, so you will need to clip or change mainspring. Seal damage and greater wear on the gun may also result from using liquid CO<sub>2</sub>.

Once you have selected your preferred method, fit the cylinder to the marker exercising great care. Wear gloves and eye protection.

**ALWAYS: Use A Barrel Plug (Use one that actually fits the Barrel tight)**

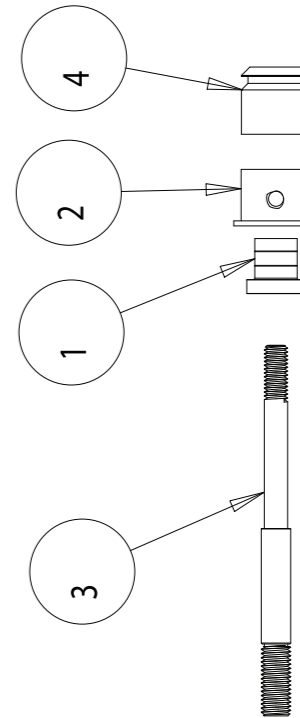
**ALWAYS: Check before Dry firing, you have not got a ball loaded in the barrel. This marker uses a closed bolt system (Means a ball is loaded into the Barrel after one has been fired)**

**DO NOT LOOK DOWN THE BARREL if you are not sure remove the Barrel and CHECK!!**



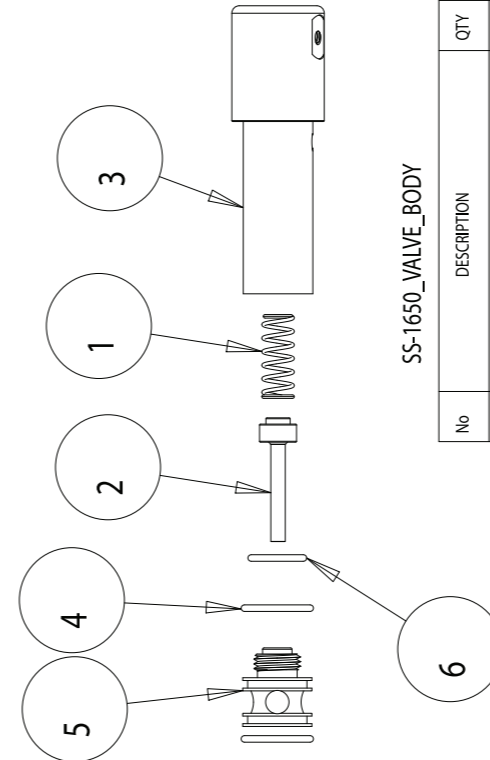
SOV-2515\_Q-NECTOR

No	DESCRIPTION	QTY
1	FILLR0345 O-RING	2
2	SOV-2520 Q-NECTOR	1
3	SOV-2550 O-RING RETAINER	1
4	SOV-2560 BUNGEY-SCREW	1
5	SOV-2570 O-RING	1



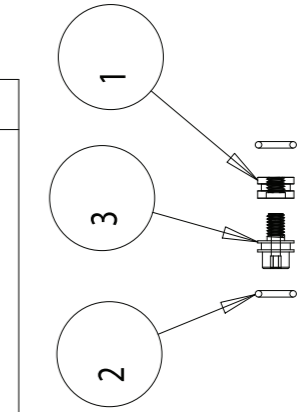
S-1075\_PICK-UP-ASSY

No	DESCRIPTION	QTY
1	S-1215 PICK-UP-COLLAR	1
2	S-1225 PICK-UP-SLEEVE	1
3	S1-1210 PICK-UP-ROD	1
4	S1-1230 PICK-UP	1



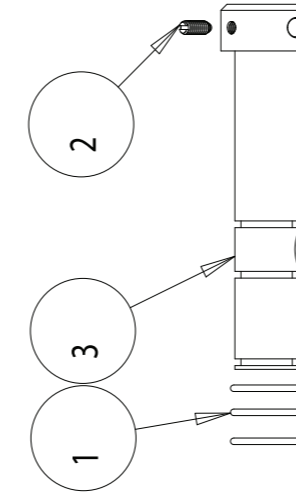
SS-1650\_VALVE\_BODY

No	DESCRIPTION	QTY
1	S-1180 VALVE-SPRING	1
2	S-1200-EXHAUST-VALVE	1
3	SS-1120R VALVE-BODY	1
4	INFER0006 O-RING BS015-70N	2
5	S-1420 O-RING 14X2-70N	1
6	S1-1060 VALVE-GUIDE	1



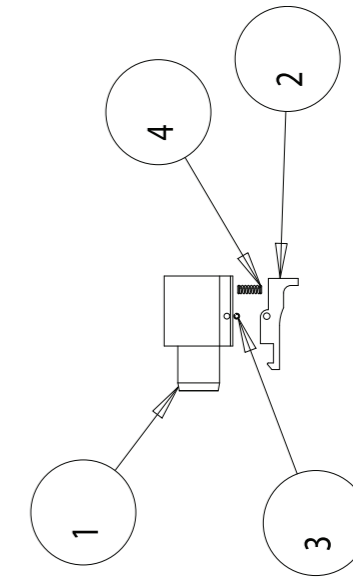
S1-1810\_VELOCITY-ADJUSTER

No	DESCRIPTION	QTY
1	S-1830 VELOCITY-ADJUSTER-NUT	1
2	S1-1820 O-RING VELOCITY-ADJ	2
3	S1-1840 VELOCITY-ADJUSTER-SEAT	3



SS-1160\_BOLT-ASSY

No	DESCRIPTION	QTY
1	INFER0006 O RING BS015-70N	3
2	SS-1700 SCREW SPRING PLUNGER	1
3	SS-1070R BOLT STOCK-CLASS	1



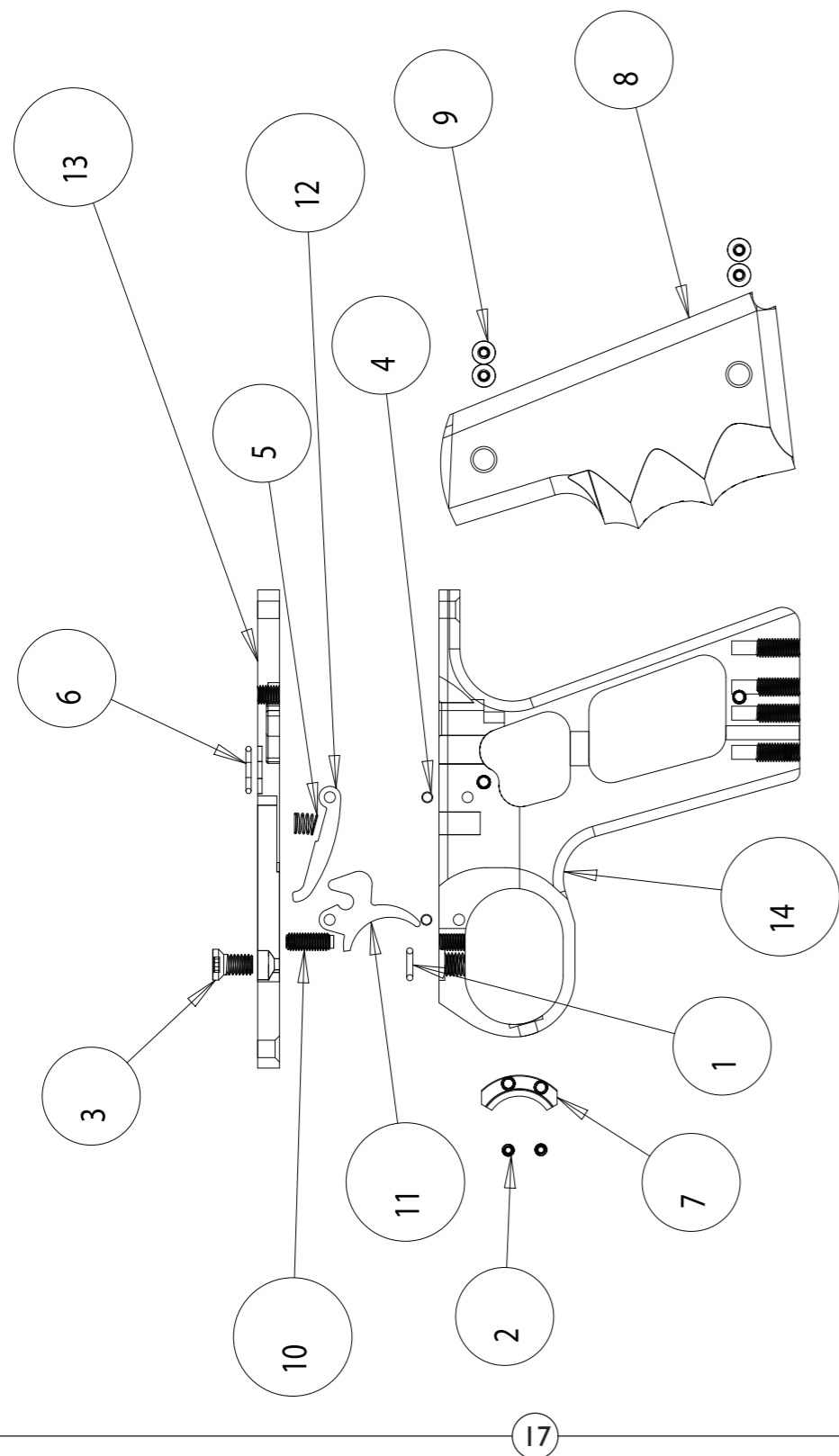
S1-1235\_HAMMER

No	DESCRIPTION	QTY
1	S1-1240 HAMMER	1
2	S1-1250 HAMMER-SEAR	1
3	S1-1260 C-LOCK-PIN	1
4	S1-1270 HAMMER-SEAR-SPRING	1



SS-1500 GRIPFRAME-ASSY

No	DESCRIPTION	QTY
1	FILLR0240 O-RING BS010-70N	1
2	INFER0049 TRIGGER-SHOE-SCREW	2
3	S-1290 SCREW-SPACE-BAR	1
4	S-1360 DOWEL-PIN	2
5	S-1390 TRIGGER-SEAR-SPRING	1
6	S-1400 O-RING-SPACE-BAR	1
7	S-1800 TRIGGER-SHOE	1
8	S1-1320 HOGUE-GRIP	1
9	S1-1330 GRIP-MTG-SCREW	4
10	SOV-2770 TRIGGER-SUPPORT-SCREW	1
11	SS-1370 TRIGGER	1
12	SS-1380 TRIGGER_SEAR	1
13	SS-1280R SPACE-BAR	1
14	SS-1300R GRIPFRAME	1



## Basic operation of the Sterling

The Sterling fires from a closed bolt on single shot. The Sterling also has rapid slam fire. Slam fire is when the trigger is held in and for every manual pump cycle a ball will be discharged.

## Getting Your Gun Ready For Use.

First install a barrel plug so as to prevent any accident due to a negligent or accidental discharge.

Then attach the paint feed system.

Your gun is now ready to fire.

Pull the pump back until it stops. This operation does two jobs simultaneously; it allows a ball to drop into the breach and also for the pickup to engage the hammer.

Move your pump forward, the ball will be loaded into the breach and the hammer will be in the cocked position.

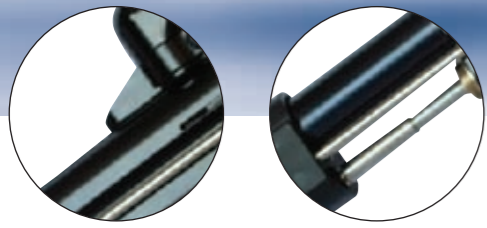
Pull the trigger and your paintball will be on its way to your target. Now you will need to check the velocity of the marker; for this you will need a correctly calibrated chronoscope. Failure to check may result in you running hot, risking disqualification in a game, injury to other players and is ILLEGAL! Ignorance is no excuse!

### Always Observe the Paintball Player Code

“As a responsible paintball player, I understand and assume all the risks I may encounter while playing paintball.”

### Responsible paintball playing duties include:

- Playing within the limits of my ability.
- Treating every marker as if it were loaded and never pointing the marker at anything I don't wish to shoot.
- Keeping the marker on “safe” until ready to shoot.
- Keeping the barrel sock in the marker's nozzle when not shooting.
- Always removing gas source before disassembly.
- Storing the marker unloaded and depressurized in a locked place.
- Following warnings listed on the gas source for handling and storage.
- Not shooting fragile objects, such as windows.
- Not shooting porous surfaces.
- Always wearing eye, face and ear protection designed specifically for paintball.
- Never shooting a person who is not wearing proper protection.
- Never shooting at velocities in excess of 90 metres (300 feet) per second.
- Accepting responsibility for my own safety in every game.
- Being environmentally conscious in every game.



## Velocity Adjustment

Velocity is increased by increasing spring tension.  
Velocity is decreased by decreasing spring tension.

To adjust the spring tension is simple, requiring no disassembly.  
(Removal of the barrel will make adjustment easier)  
Insert the long 3/32 Allen key into the front of the pump. (A small 3mm hole in the front of the pump)  
Turn this clockwise to reduce and anti-clockwise to increase velocity. 6.5 turns of adjustment are available, anything more than this being needed will require disassembly and a change of the mainspring.

## Changing Main Spring

Remove the Front Field Screw, disconnect the Pump Rod from the bolt found at the rear of the body.  
Remove pump rod from the bolt and turn pump rod counter clockwise 90 degrees.  
Pull out bolt from the upper rear chamber.  
This will ensure easy removal of the whole assembly.  
Slide the pump, pump assembly together with the Pump Rod off of the barrel.  
Remove main spring from inside the lower chamber. (The spring sits inside the hammer)  
Replace the main spring with one that is slightly heavier in its compression. (Supplied with marker)  
Reverse strip procedure.  
At this point ensure that the bolt is synchronised with the pickup, you must pull the pump back to its stop position and look into the direct feed collar; the front of the bolt must have cleared the rear of the feed collar.  
This position is set at the factory and should not need adjusting.

Now check your gun over a chronograph to measure the velocity.  
**IMPORTANT – the MAXIMUM safe velocity is**  
300 feet per second. It is illegal to exceed this velocity.

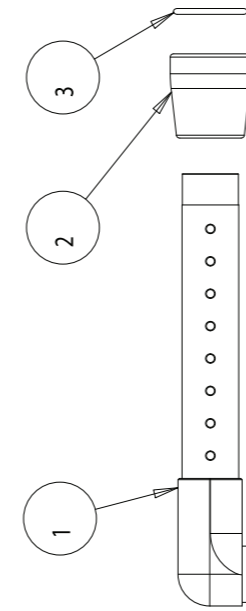
## Changing Exhaust Valve

**IMPORTANT NOTE: You must remove the power source, and cycle action or serious injury may occur.**

Remove the Rear Field Screw. Pull the valve body out from the lower chamber leaving the pipe in place.  
Unscrew the brass valve guide positioned at the front of the Valve body using some wooden doweling to prevent damage, inside you will find the exhaust valve and spring. Ensure the sealing surface of the exhaust valve is clean and free from any grit or swarf (metal particles), also check the valve assembly is still firmly attached to the shaft. Then reverse the procedure ensuring the smooth entry of the pipe into the connector to avoid damage to the seal inside.

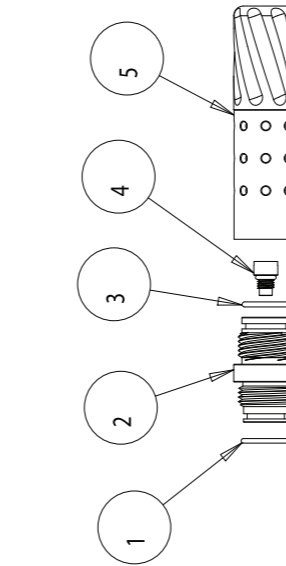
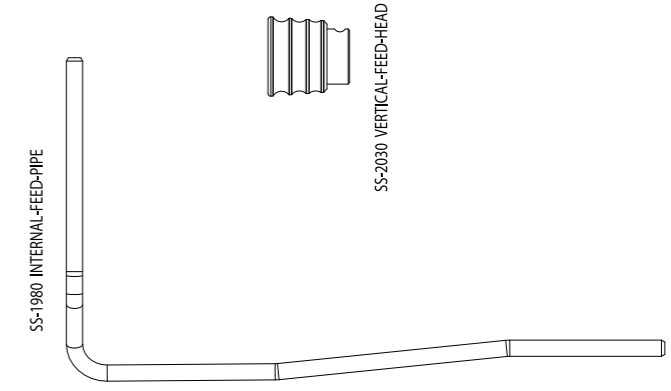
Now check your gun over a chronograph to measure the velocity.

**IMPORTANT - remember the MAXIMUM safe velocity is**  
300 feet per second. It is illegal to exceed this velocity.



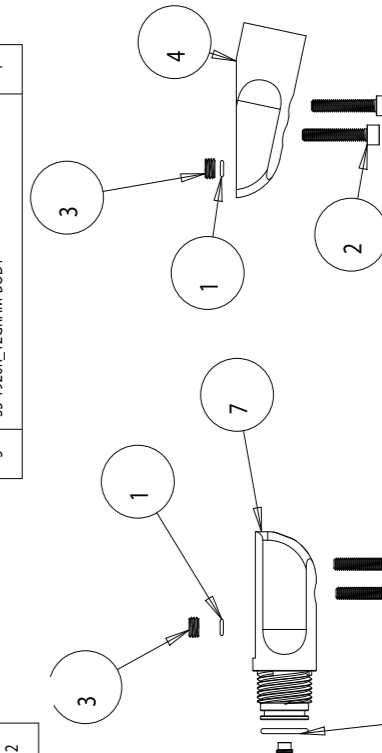
SS-2060 HORIZONTAL-FEED

No	DESCRIPTION	QTY
1	SS-2080 HORIZONTAL FEED HEAD	1
2	SS-2090 STORAGE-TUBE-CAP	1
3	SS-2095 TUBE-GRIP	1



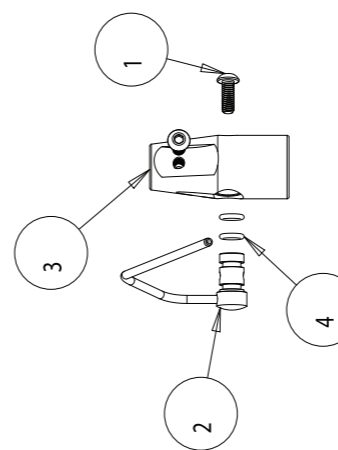
SS-1910 BOTTLE-12GRAM-ASSY

No	DESCRIPTION	QTY
1	INFER0126_O-RING	1
2	SS-1930_BOTTLE_12GRAM_ADAPTOR	1
3	SS-1940_O-RING-14X2-70N	1
4	SS-1941_PIERCE-UNIT	1
5	SS-1920R_12GRAM-BODY	1



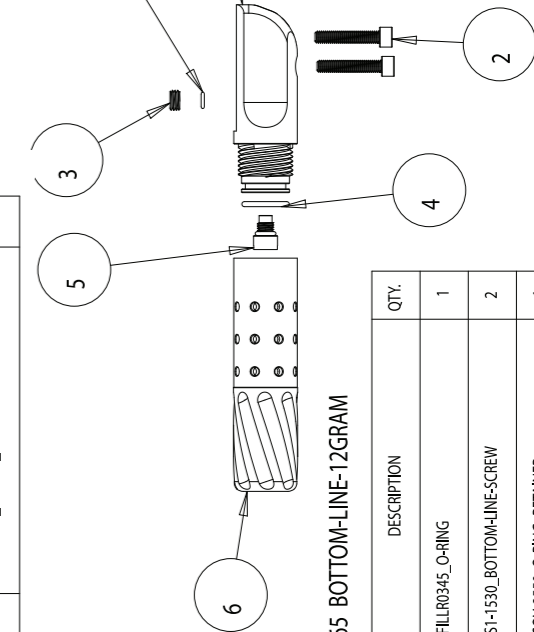
SS-2100 BOTTOM-LINE-C-AIR

No	DESCRIPTION	QTY
1	FILLR0345_O-RING	1
2	S1-1530_BOTTOM-LINE-SCREW	2
3	SOV-2550_O-RING_RETAINER	1
4	SS-2110_BOTTOM-LINE-C-AIR	1



SS-1945 FRONT-BOTTLE-MOUNT

No	DESCRIPTION	QTY
1	INFER0015_BOTTOM_HEAD_SCREW	2
2	SS-1960_FRONT-PIPE	1
3	SS-1950R_FRONT-BOTTLE-MOUNT	1
4	FILLR0240_O-RING_BS010-70N	2



SS-1965 BOTTOM-LINE-12GRAM

ITEM	DESCRIPTION	QTY
1	FILLR0345_O-RING	1
2	S1-1530_BOTTOM-LINE-SCREW	2
3	SOV-2550_O-RING_RETAINER	1
4	SS-1940_O-RING-14X2-70N	1
5	SS-1941_PIERCE-UNIT	1
6	SS-1920R_12GRAM-BODY	1
7	SS-1970R_BOTTOM-LINE_12-GRAM	1





Vertical Feed Assembly



Bottom line – 12 Gram Assembly



Front Bottle Mounting Assembly



## Servicing

All repairs and adjustments must be carried out by a fully competent person. If you are unsure return marker to the factory to have work carried out.

**Any damage resulting from attempts to do it yourself are not covered under warranty and may render the marker unsafe!**

Your Sterling will require little more than cleaning and regular lubricating. However it is recommended to replace all the 'O' rings on the marker once a year as a preventative measure and ensure efficient function. Always ensure your gun is clean and free from mud or dust. Lightly oiled internals will give you a more consistent velocity.

We recommend Arrow Precision LLC's own brand, called STP LUBE, which has been formulated specially for Sterlings, and is available from your dealer.

To disassemble your Sterling for servicing you need to remove both front and rear knurled field screws. This will detach the grip frame from the body.

The valve body may now be removed from the main body.

Disconnect pump rod from the bolt by flexing the rod out of bolt, slide pump over the barrel, complete with pickup and pickup guide assembly.

Remove bolt from body, slide out hammer and spring from body's lower chamber.

You have now disassembled your gun into its main sub-assemblies.

### Servicing of the sub-assemblies:

#### A. Pump and Assembly

Pump Assembly requires only cleaning and light oiling.

#### B. Valve body and valve

Valve body has the valve guide and exhaust valve with valve spring inside.

Unscrew valve guide to reveal exhaust valve and spring. Check exhaust valve and remove any debris which may have embedded itself on the seal face.

If you continue to get a leak of gas through the barrel you may have to replace the exhaust valve.

#### C. Body and barrel

Clean and lightly oil both upper and lower chambers.

#### D. Bolt

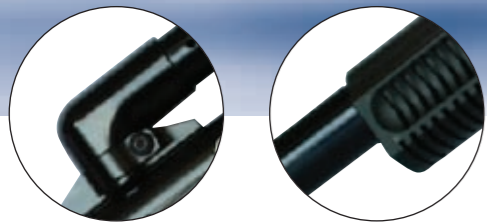
Check 'O' rings are clean and lightly oil. Spare 'O' rings for bolt available in Sterling service kit.

#### E. Hammer and Main Spring

Ensure SEAR has free movement, clean with solvent and lightly lubricate with oil.

#### F. Grip assembly with spacer bar

Grip assembly requires only a few drops of oil introduced around SEAR. The spacer bar which is mounted on the top of grip frame has a seal, this is called the spacer bar O-ring. Ensure this is in place - if not a spare is included in the service kit.



## Servicing (Continued)

### G. Barrel

Inspect the barrel and remove any nicks or burrs that may have occurred during use, paying particular attention to the muzzle, as this is the most likely place for damage to occur and has the greatest effect on ball breakages. Use fine emery paper to remove damage and polish afterwards, this will remove anodised finish, so small areas can be re-touched with a permanent black marker pen, anything larger will require re-anodising of the part.

Always make sure your barrel is clean, remove any gelatine and paint residue with a damp swab or cotton tail pull through.

To remove barrel, turn counter clockwise and pull out from body of gun.

If you have just serviced your gun and have oiled the internals, fire off 6 shots without paintballs. This will introduce oil into the barrel. This must be cleaned out otherwise your accuracy will suffer. Silicone oil may be used internally on the barrel, however is not recommended for gun lubrication.

The barrel may be cleaned without the need to remove it from the body, this is achieved by removing bolt rod from the bolt and turn bolt rod counter clockwise 90 degrees. Pull out bolt from the upper rear chamber.

Insert pull through or cleaning rod through rear body upper chamber and clean body and barrel simultaneously. Alternatively, a stick squeegee may be used.

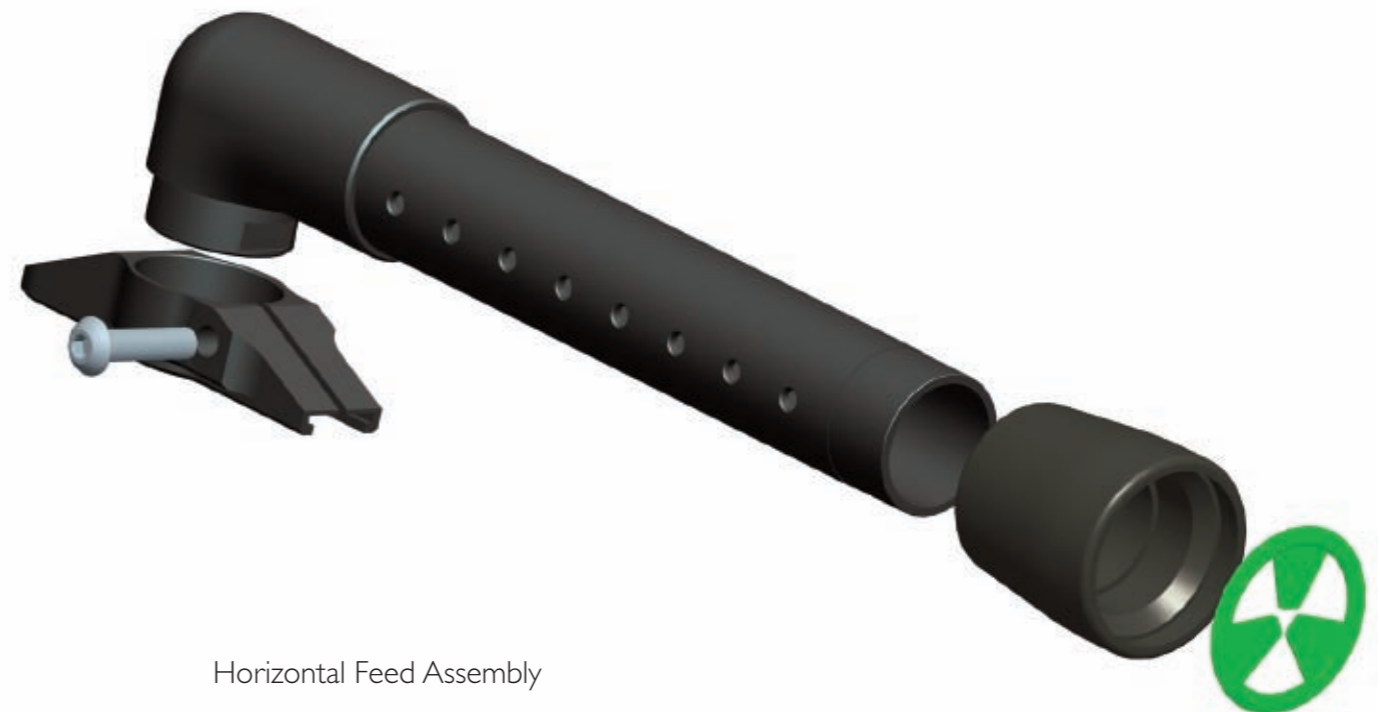
Re-assemble the gun in the reverse of the procedure described above then dry fire the gun five six times to blast through any excess lubricant.

### H. Paint feeds

Always ensure paint parts are clean and dry before reloading. The feed head mounting can be removed by undoing the clamp screw and sliding screw and sliding it off the body after removing the barrel. It can be replaced either way allowing the horizontal feed to be mounted forward to rear facing. Check bolt and breech area for paint residue or gelatine shell, clean and dry as necessary.

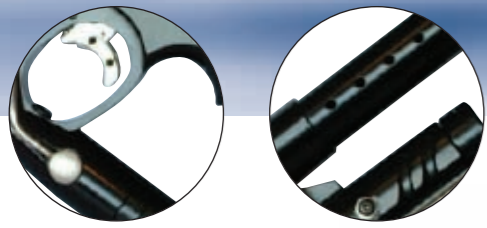


Grip Frame Assembly



Horizontal Feed Assembly





The valve body and Q-nector assembly

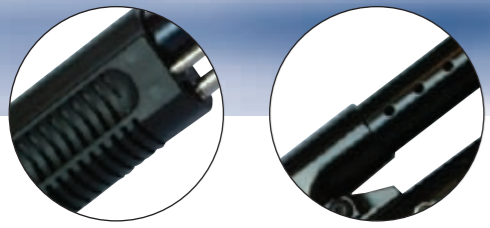


The valve body and Q-nector disassembled

## Troubleshooting

If you suspect anything is wrong with your Sterling, stop using it straight away! Remove paintballs, de-gas and perform an inspection. If you have any doubts return your Sterling to Arrow Precision, LLC.

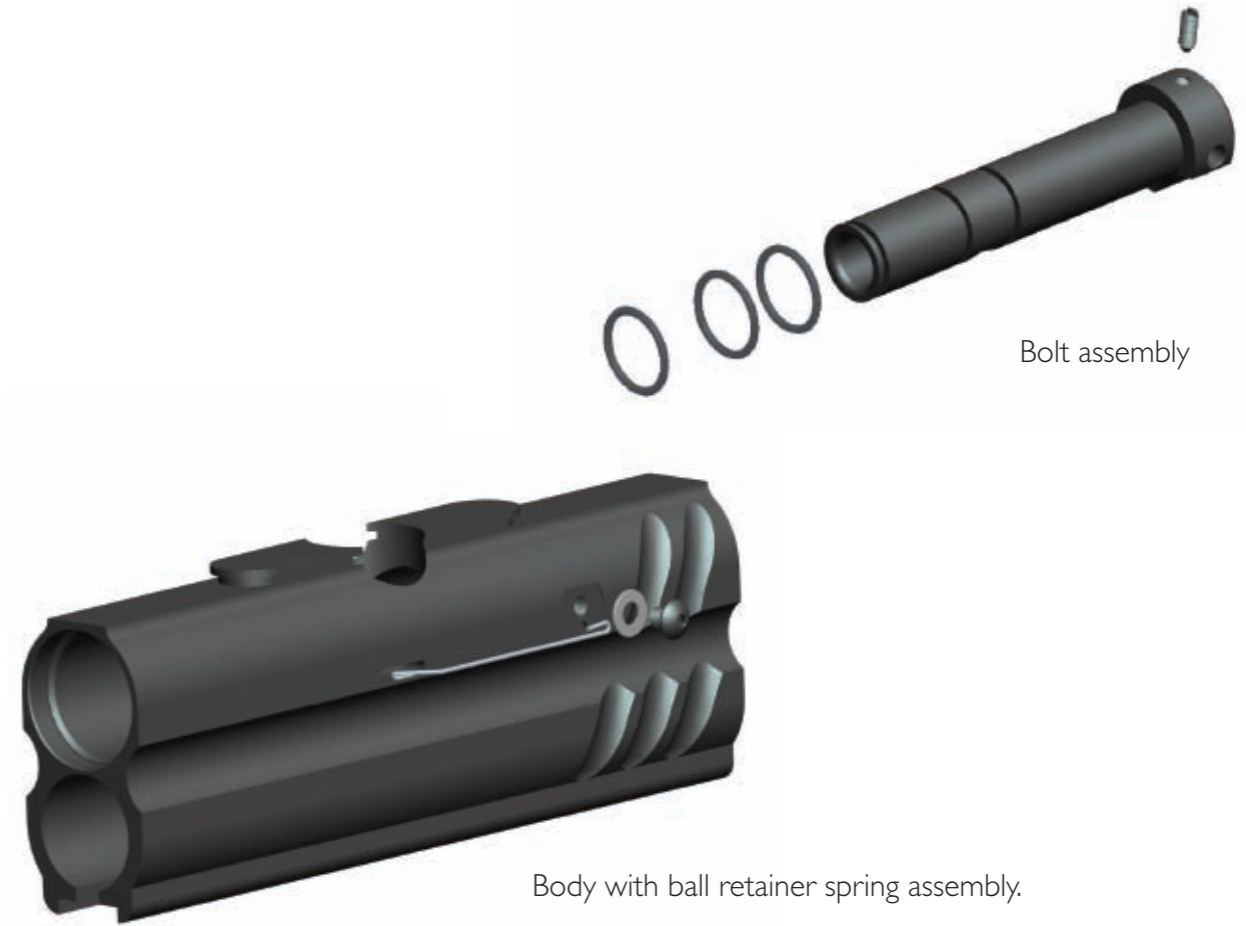
SYMPTOM	REMEDY
Gas leaking down Barrel. Can hear gas escaping/hissing.	Check exhaust valve and spring for damage, check valve seating for damage, replace as necessary.
Gas blowing out of feed bore.	Timing incorrect-rest timing; return to Arrow-Precision.
Gas leaking from top of Grip Frame.	The space bar O ring has failed and needs replacing.
Sudden drop in velocity.	Check tank pressure. If shooting in cold weather could be freeze down, so warm up tank. Damaged valve - replace Weak or damaged mainspring - replace. Damaged 'o' rings - replace.
Paintballs getting frequently chopped.	Timing incorrect-Cocking arm needs re-timing.
Paintballs not exiting barrel.	Feed mounting not correctly aligned with feed bore. No gas pressure. No paintballs.
Can't cock marker.	Pickup has loosened - return to Arrow-Precision No gas pressure - try gassing up to see if the problem is resolved.
Can't tighten knurled field screws.	Threads have stripped – fit a helicoil or replace part.
Keep finding red welts and paint marks on body.	Get better!
Rattling sound from marker	Cocking arm loose/worn - replace. Pickup has become detached - return to Arrow-Precision. Broken hammer or sear - replace.



Assembly and Disassembly

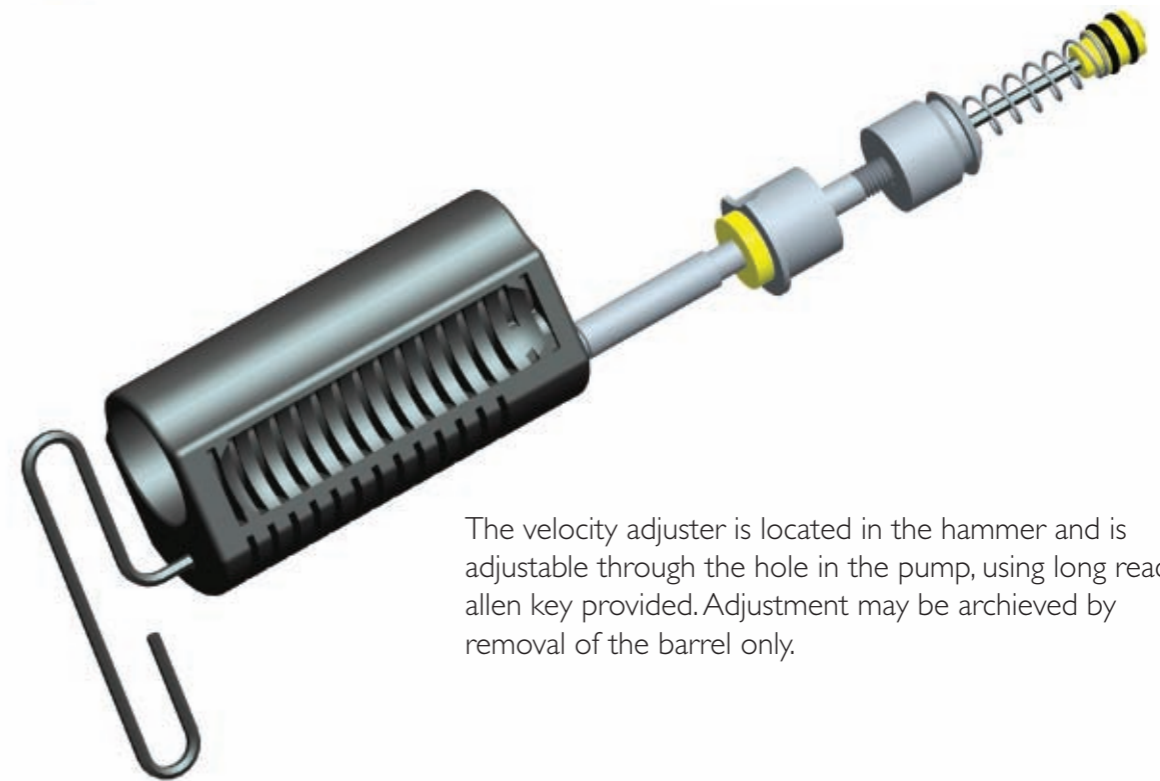


Internals with body removed



Bolt assembly

Body with ball retainer spring assembly.



The velocity adjuster is located in the hammer and is adjustable through the hole in the pump, using long reach allen key provided. Adjustment may be achieved by removal of the barrel only.